



Leaders in Industrial Maintenance Solutions
& Pump Technology

Volume 2 Issue 5

CASE FILE

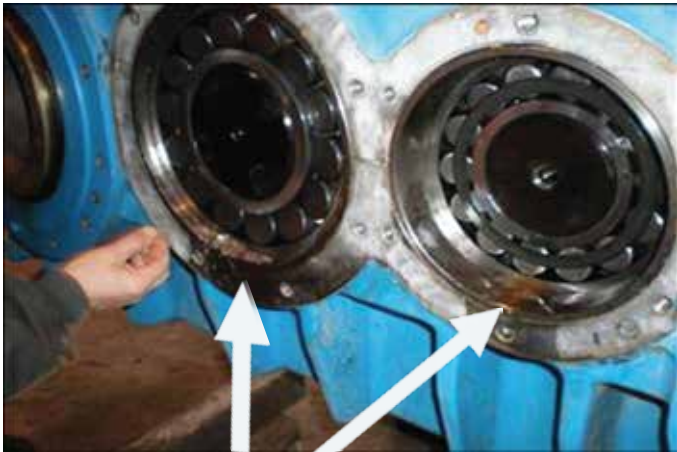
Geared Up for Good Vibrations!

The Customer

Large Paper Mill, New South Wales, AUSTRALIA

The Application

This gearbox required refurbishment and correct adjustments and alignments.

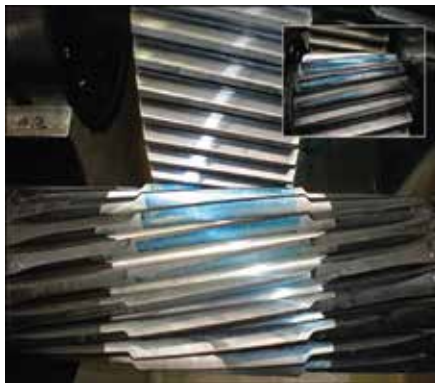


Metal shavings from incorrect bearing contact.

Correctly refurbished to prevent costly breakdowns and plant shutdowns.



Fully refurbished, cleaned and coated.



The Problem

The gearbox suffered from incorrect gear mesh and gear float settings. As a result, this caused indentation in the gear teeth and excessive loads on gears and bearings, causing premature wear and subsequent unwanted vibrations and fine metal bearing material evident, leading to contamination of lubricating oil, bearings and gears.

The Services Used

Bayswater Workshop facility and personnel.

The Application Method

The first step was to check all shafts for straightness on the centre lathe. All journals of the shaft and gear teeth were then polished to remove any high spots and sharp edges. Bearings were then installed on the shaft using the bearing induction heater to heat the bearings. The top cover was then installed with sealing glue in between the flanges. The axial thrust was checked again before being fully re-assembled, cleaned and painted. The lubricating system was cleaned with high pressure air, the VEM electric motor was replaced and the oil filter and O rings of the pipe work were also replaced.

The Outcome

Long term and reliable life cycles of critical equipment are of paramount importance to major industry. A correctly refurbished and maintained gearbox prevents unexpected breakdowns and subsequent shut downs of major manufacturing plants.